

Makos are the natural selection for growing publishers, commercial printers and repro professionals. They can be field upgraded for even higher performance when increased capabilities are required

Mako Imagesetters



Makos are the clear market leader in specification and performance for their price. They are modular and upgradeable, so you can start with the entry-level 2-page Mako 36 and grow your production capacity without investing in totally new systems.

Wider, faster, dryer - There are three models in the ECRM Mako imagesetter range. You can start at the top with the Mako 56, for full 4-up impositions including color bars and printers marks, or work your way up with the Mako 36 or 46. For example, if you need your Mako 36 to go faster, handle 4-page impositions or run environmentally friendly dry film, it can be field upgraded in hours.

Quality - High-end performance on all Makos is delivered by advanced imaging technology. This provides fast imaging



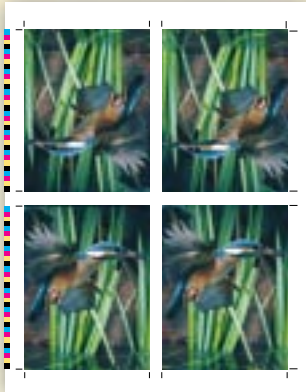
speeds, razor-sharp dots and a choice of resolutions for job output up to 200-line screen with total confidence.

Flexibility - Makos can be used with film, paper and polyester plates, providing maximum flexibility in media choice to suit job specification and budget. Each Mako also has a choice of high-speed Mac or PC software RIPs to adapt to your production requirements.

Reliability - Mako imagesetters are built to satisfy your customer on time, every time. Innovative and robust design together with high quality manufacture to ISO 9001 standards deliver high levels of reliability year after year.



Mako Imagesetters



With Mako™ imagesetters, you can 'futureproof' your investment - buy the right product for your current needs and upgrade to wider, faster, dryer performance as your business grows. Makos also offer superior value. They are inexpensive to buy, operate and maintain providing the fast ROI needed by growing businesses. Makos pay for themselves fast - they are the natural selection for your next business investment.

Features & Benefits

Wide variety of press formats

- Mako 56 - full 4-page impositions including color bars and printer's marks, suitable for most B2 presses
- Mako 46 - 4-page imposed pages, or poster images up to 46.1 cm (18.1") wide
- Mako 36 - 2-page imposed signatures up to 36.0 cm (14.1") wide

Upgradeable

- High speed upgrades up to 81.0 cm/min (32.0"/min) available on Mako 36 and Mako 46
- Dry film upgrades available on Mako 36 and Mako 46

- Wider format upgrade up to 46.1 cm (18.1") available on Mako 36

High quality imaging

- Repeatability within 25 microns (0.001")

Multiple resolutions

- Selectable from 1000 up to 3556 dpi to cover all job requirements

Media choices

- Film, paper or polyester plate for maximum flexibility

Reliability

- Designed and manufactured to ISO 9001 standards
- Built for intense use day after day

DEALER STAMP



ECRM® Imaging Systems

www.ecrm.com

All ECRM products carry the CE mark. All products are CSA & CSA/NRTL certified. Class 1 Laser Products.

ECRM Headquarters:

554 Clark Road
Tewksbury MA 01876
USA
Tel: (+1) 978.851.0207
Fax: (+1) 978.851.7016
sales@ecrm.com

ECRM Sales Offices:

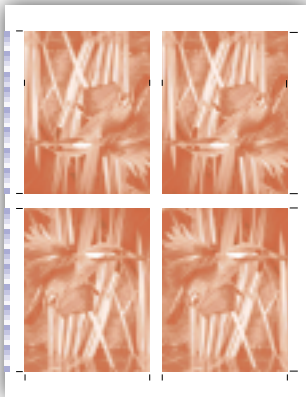
18200 W. McDermott Street
Suites E&F
Irvine CA 92614
USA
Tel: (+1) 949.863.3001
Fax: (+1) 949.863.3040
sales@ecrm.com

3 Century Ct., Tolpits Lane
Watford, Hertfordshire
WD1 8RS, UK
Tel: (+44) 1923.218.255
Fax: (+44) 1923.218.256
sales_uk@ecrm.com

Room 1001, K. Wah Centre
191 Java Road
North Point, Hong Kong
Tel (local): 2564.8989
Tel (Intl.): (+852) 8170.9000
Fax: (+852) 2564.8821
sales_hk@ecrm.com

Room 603-604
Beijing East Ocean Centre
24A Jian Guo Men Wei Ave.
Beijing, 100004 PR, China
Tel: (+86) 10 6515.5675
Fax: (+86) 10 6515.5674
sales_hk@ecrm.com

Mako 56 Specification



Mako imagesetters are the natural selection for publishers, commercial printers, repro houses and bureaus

Imaging

Maximum Recording Width

22.0" (560mm)
22.2" (564mm) with overscan

Recording Source

One 10 mW visible red laser diode
(670 nm recording wavelength)

Spot Size

10-35 microns (resolution dependent)
measured at the film plane

Resolutions

12 resolutions from 1000 dpi to 3556
dpi (394 dpcm to 1400 dpcm)

Maximum Line Screen

200 lpi (78.7 lpcm)

Recording Speeds

1000 dpi - 16.00"/min, 40.64 cm/min
1016 dpi - 15.75"/min, 40.01cm/min
1200 dpi - 13.33"/min, 33.86 cm/min
1270 dpi - 12.60"/min, 32.00cm/min
1446 dpi - 11.07"/min, 28.12cm/min
1524 dpi - 10.50"/min, 26.67 cm/min
1800 dpi - 8.89"/min, 22.58cm/min
2032 dpi - 7.87"/min, 19.99 cm/min
2400 dpi - 6.67"/min, 16.94 cm/min
2540 dpi - 6.30"/min, 16.00 cm/min
3048 dpi - 5.25"/min, 13.34cm/min
3556 dpi - 4.50"/min, 11.43cm/min

Repeatability

0.0012" (0.03 mm) typical over four
consecutive 22" x 28" (56 x 71 cm)
separations on film. May vary
according to media, media packaging
and processing conditions

Media

Types

Visible red sensitive film, polyester
plate or paper material



Thickness

0.004" to 0.008" (0.1 to 0.2 mm)

Configuration

Emulsion in, 2" (50 mm) diameter
core, breakaway taped to core

Cassette Capacity

Up to 400' (120 m) of 0.004" material,
5.7" (145 mm) maximum roll
diameter

Media Widths

22.1" (56.1 cm)
22.0" (56.0 cm)
20.5" (52.1 cm)
20.1" (51.0 cm)
20.0" (50.8 cm)
19.6" (49.8 cm)
18.6" (47.2 cm)
18.1" (46.0 cm)
18.0" (45.7 cm)
17.7" (45.0 cm)
16.0" (40.6 cm)
14.0" (35.6 cm)

Take-up Cassette

Capacity 25.0' (7.6 m), 0.004"
material; 0.008" material requires an
on-line processor

Processing

Output cassette is included for off-
line transfer to a processor.
Removable cassette tray and on-line
interface allow for easy connection
to an on-line processor

Physical & Environmental

Dimensions

32.0"W x 44.6"D x 19.3"H
(81 cm x 113 cm x 49cm)

Weight

235 lbs (105kg)

Heat Dissipation

1000 BTU/hour maximum

Power Requirements

100/115/230 V (± 10%); 1.7/1.5/1.0
amps;
50/60 Hz, single phase

Operating Conditions

62°F - 86°F; 17°C- 30°C relative
humidity 45-65% non-condensing;
relative humidity outside of this
range may affect imagesetter
performance