



**XEIKON**

# IN MOULD LABEL INJECTION

Application



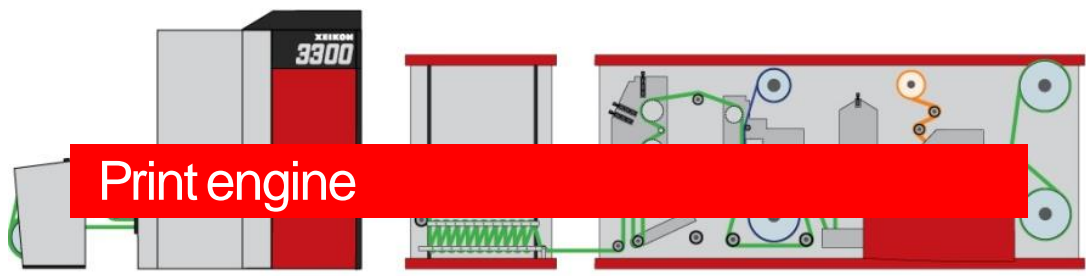
# Why to choose for Xeikon?



1. Choice of different digital presses
2. Full rotary technology – variable repeat
3. Consistently high quality
4. Application tuned dry toner
5. Dedicated workflow



# In Mould labels applicatie



### Services

- Color services
- Dashboard services
- ...

### Software

- X-800 workflow

Xeikon Aura  
Software

### Print media

- Standard materials
- Priming strongly recommended

Xeikon Aura  
Print Media

### Consumables /tools

- Dry toner ICE

Xeikon Aura  
Consumables & Tools

### Equipment

- miniUCoat
- WVM-primer module

Xeikon Aura  
Equipment



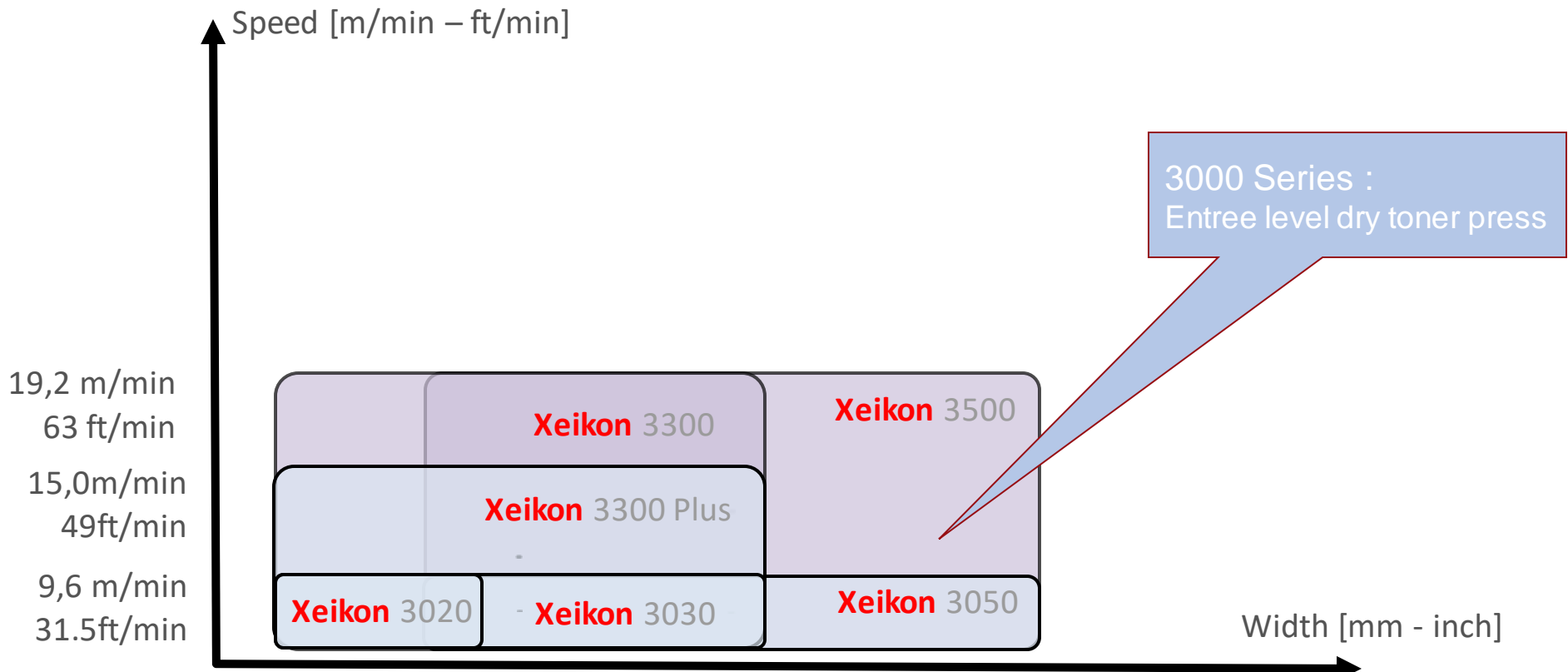
**XEIKON**

## Print engines

3050/3500/CX500



# LABELPRESS PORTFOLIO



3000 Series :  
Entree level dry toner press

# full rotary principle

- Webfed press with variable repeat length



Stack



Stream out of the press

- Sheetfed press



Stack



Stream out of the press

# full rotary principle

- Webfed press with variable repeat length



Stack

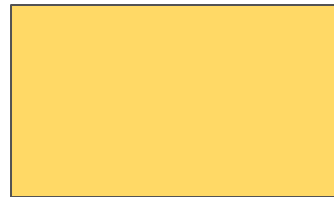


Stream out of the press

- Sheetfed press



Stack



Stream out of the press



**XEIKON**

## **Software**

---

X-800 workflow

MyPress

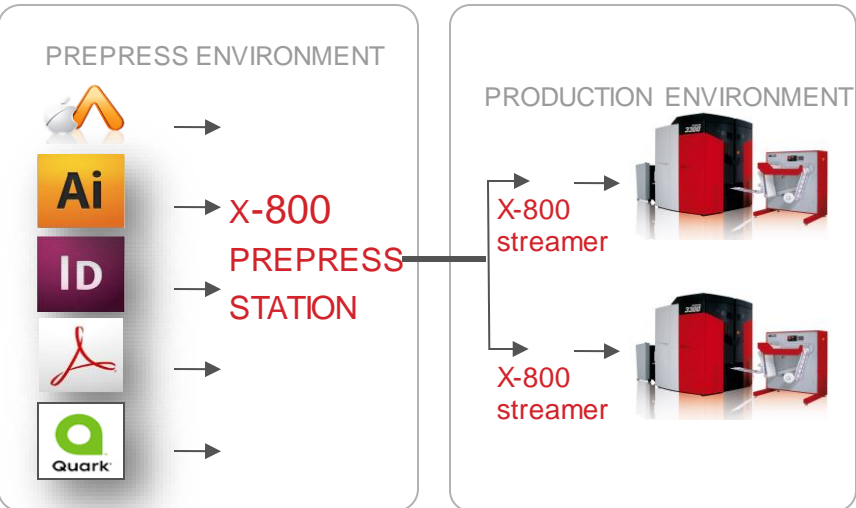




# X-800 workflow configurations

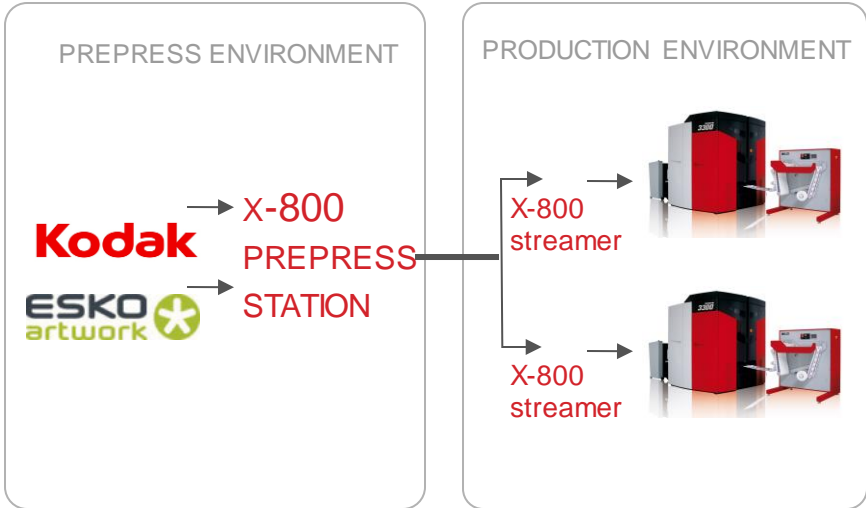
## STANDALONE SETUP

DESIGN WORKFLOW      DEVICE WORKFLOW



## INTEGRATED SETUP

PRODUCTION WORKFLOW      DEVICE WORKFLOW





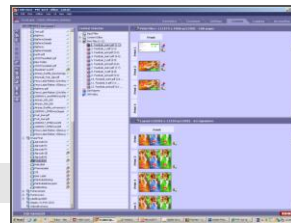
# MIS integrated setup



Xeikon Engine



X-800



MIS

- Quotation
- Order Entry
- JobTicket
- Logistics
- Scheduling
- Tracking
- Invoicing
- Accounting





**XEIKON**

## Print Media

## Print media



dimensional stable within <1%

- Cavitated PP film >70 $\mu$
- Solid white, clear PP >57 $\mu$
  
- Priming is mandatory to maintain toner adhesion when moulded objects are exposed to humid environments



## Print media



Treofan : EUH 70

Treofan : EWR 57

Treofan : ETR 57

Taghleef : LIG70

Taghleef : LIH70

Taghleef : LIT55

Innovia : Rayoform IW 72

PPG : SP1000 TS



folding carton press

workflow software

dry toners

print media

converting equipment



**XEIKON**

## **Consumables**

ICE toner

Primers

# Consumables



## ICE- toner

- Reliable process - Offset a-like quality
  - PET-based resin, high melting point
  - Light fast : >6 blue whole scale
  - Food compliant (indirect, direct dry food)
  - No odor
  - One-pass opaque white
- 
- CMYK, white, custom spot colors, Of-The-Shelf spot colors, Creative colors, ...

# Primers

- Water based : DP4453 (Michelman)
  - Corona treatment before coating advised, dyne level must be 40 when coating
- Inline priming module available (WVM)





**XEIKON**

## Equipment

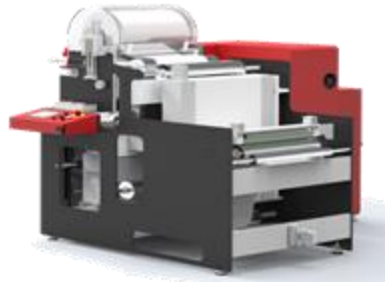
miniUCoat 500

Web Varnish Module

# Equipment

WVM (Web varnishing module)

- Inline - placed between unwinder and full color printing press
- Able to apply waterbased primers



miniUCoat500

- Inline varishing module and rewind





**XEIKON**

# **Services**

Color Services

# COLOR SERVICES

- On-site service providing **audit, consulting and implementation** on Color management
- Value for the printer :
  - Reduce printing cost
    - Reducing ink/toner consumption
    - Reducing waste
  - Quality control system
    - Is your operator printing within the expect color standard
    - Color and Quality consistency

# Values for different type of printer

# printstation used

5 print station  
excl White



Ability to make color profiles for all the color configurations  
Toner cost reduction – on average 15%

**Toner cost reduction – on average 15%**

Quality control tool – ensure that the press is printing with 'gamut'  
Reduce/eliminate press time wasted on color matching manipulation  
Reduce substrate waste related to color matching  
Toner cost reduction  
Ability to make color profiles for all color configurations

Full package

Light package



4 print station ,  
CMYK



**Toner cost reduction – on average 15%**

Quality control tool – ensure that the press is printing with 'gamut'  
Reduce/eliminate press time wasted on color matching manipulation  
Reduce substrate waste related to color matching  
Toner cost reduction



End Users Need For Color Quality As Business Driver